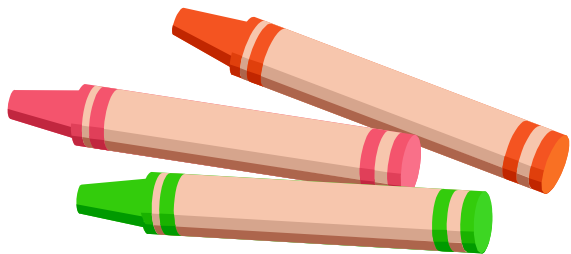


How can I become a MEMBER?

- ◆ It's FREE!
- ◆ Call the Partnership for Children at 828-328-4848
OR
Come by the office on the 4th Floor of the First Plaza Building on Tate Boulevard in Hickory, 8-5, Monday - Friday.
- ◆ Fill out a membership form, a member agreement contract, and receive a member number.
- ◆ Contact the Partnership for Children to get a tour of the facility.
- ◆ Whenever you go to the **CREATION STATION**, put your name and membership number on the log at the sign-in table.
- ◆ Enjoy all that the **CREATION STATION** has to offer!



Creation Station
Catawba County Partnership for Children
P.O. Box 3123
Hickory, NC 28603
828-328-4848

Creation Station

Brought to you by:



Mailing Address:
P.O. Box 3123, Hickory, NC 28603

Street Address:
4th Floor, First Plaza Building
1985 Tate Blvd. SE, Suite 411
Hickory, NC 28602

Website:
www.catawbakids.com

828-328-4848

What is CREATION STATION?



The **CREATION STATION** is a project funded through the Catawba County Partnership for Children and Smart Start that offers all types of resources to child care teachers and directors, parents of preschoolers, and others!

Within the **CREATION STATION**, we have a training room that offers a comfortable setting for trainings and workshops and state-of-the-art audio visual equipment. The Partnership and other partner agencies will be hosting trainings in this room throughout the year. All **CREATION STATION** members will also receive periodic mailings with training information.

The **CREATION STATION** also offers a resource room, complete with a resource library of books, videos, and magazines that can be checked out to members. We also offer use of a die-cut machine and over 200 die-cut shapes, laminator services, color copier services, and lots of exciting art supplies, including construction paper, foam, magnetic sheets, and sponge sheets, pens, scissors, glue, and markers.

If you'd like more information about how to be able to access these resources, please call Judy Sayen, **CREATION STATION** Coordinator, at 828-328-4848.

What is in the RESOURCE LIBRARY?

The Resource Library offers books, magazines, and videos on the following topics and many others:

Art, Behavior, Child Development, Circle Time, Curriculum, Developmentally Appropriate Practices, Directors, Family Child Care Homes, Health and Safety, Infant/Toddler, Language, Math, Multicultural, Music, Nutrition, Parenting, Physical Education, Portfolio, Professional Development, School Age, Science, Special Needs, and Transitions.

What types of TRAININGS will be provided?

Trainings and workshops will be provided by the Partnership for Children, the Early Childhood Support Team, the Children's Resource Center, and other agencies. Expect topics such as "Make it and Take it" workshops, playground safety, hand washing, etc.

Members will receive announcements of all workshops and trainings.

Call Judy at 828-328-4848 for more information or to sign up for upcoming events.

Are there any FEES?

There is no fee for you to become a member of the **CREATION STATION**!

There are fees for some of the art supplies that you will be able to use. The fees just cover our cost so we can replenish used materials.

There will be fees for items such as:

Construction Paper	Foam Sheets
Sponge Sheets	Color Copies
Magnetic Sheets	Laminating

This will be an "on your honor" system. When you use these items, just mark them on the Tally Sheets that will be at the sign-in desk. Judy Sayen, the **CREATION STATION** Coordinator, will give you a receipt for your payment.

How do I CHECK-OUT resources?

Books and videos can be checked out for up to two weeks. You will just have to write your name, member number and today's date on the library card and leave it in the check-out box at the front table.

You will be expected to return checked out materials by two weeks after your check-out date.